

PROPOSED LEGEND

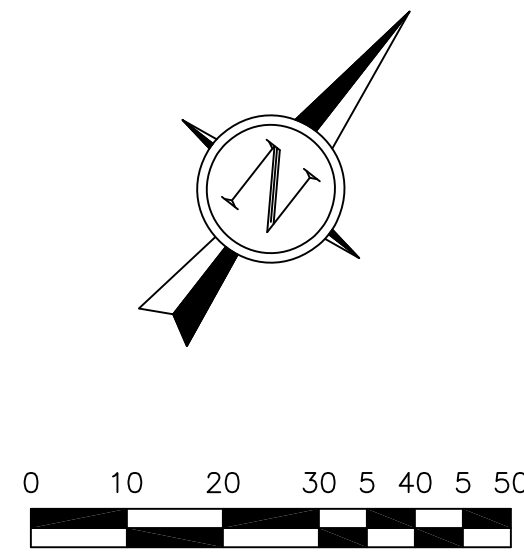
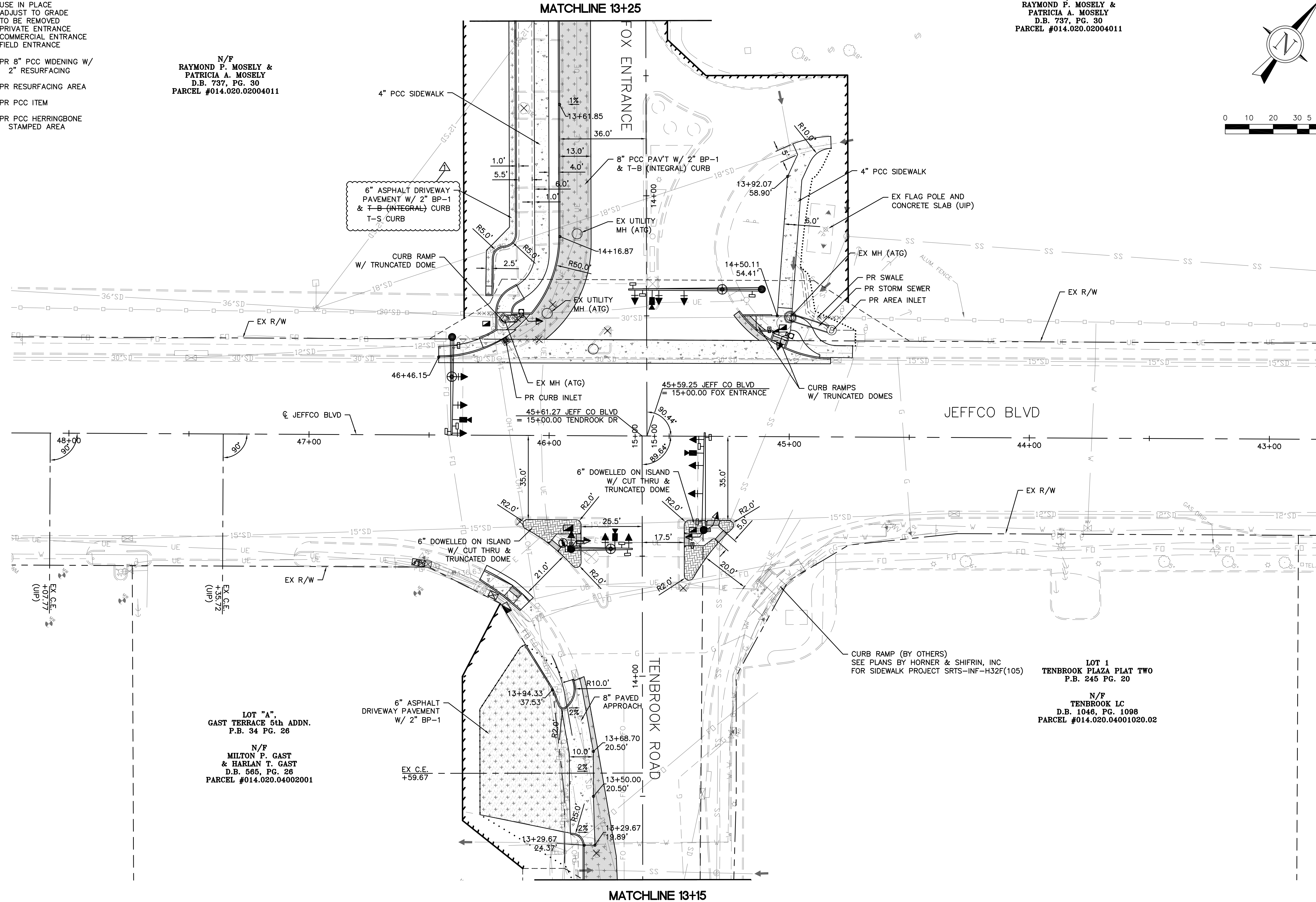
- EX - EXISTING
 - PR - PROPOSED
 - UIP - USE IN PLACE
 - ATG - ADJUST TO GRADE
 - TBR - TO BE REMOVED
 - P.E. - PRIVATE ENTRANCE
 - C.E. - COMMERCIAL ENTRANCE
 - F.E. - FIELD ENTRANCE
-
- PR 8" PCC WIDENING W/ 2" RESURFACING
 - PR RESURFACING AREA
 - PR PCC ITEM
 - PR PCC HERRINGBONE STAMPED AREA

N/F
**RAYMOND P. MOSELY &
 PATRICIA A. MOSELY**
 D.B. 737, PG. 30
 PARCEL #014.020.02004011

LOT "A",
 GAST TERRACE 5th ADDN.
 P.B. 34 PG. 26

N/F
**MILTON P. GAST
 & HARLAN T. GAST**
 D.B. 565, PG. 26
 PARCEL #014.020.04002001

N/F
**RAYMOND P. MOSELY &
 PATRICIA A. MOSELY**
 D.B. 737, PG. 30
 PARCEL #014.020.02004011



Corporate Engineering
 Certificate # 000381



CIVIL ENGINEER

DATE PREPARED
1/26/18

ROUTE STATE
 MO

DISTRICT SHEET NO.
 SL 10

COUNTY
 JEFFERSON

JOB NO.
 129-15

CONTRACT ID.

PROJECT NO.

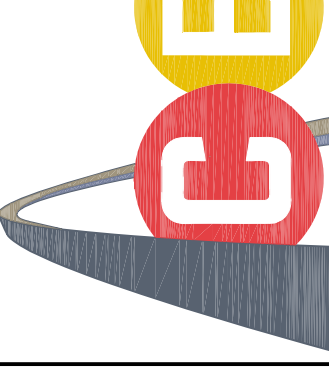
BRIDGE NO.

DATE	DESCRIPTION
3/9/16	MoDOT PRELIMINARY APPROVAL
12/5/17	FINAL R/W PLANS (REV)
12/13/17	FINAL PLANS
1/26/18	PS&E PLANS
5/29/18	ADDENDUM 1

**TRANSPORTATION
 ENGINEERS+PLANNERS**

13400 OLIVE BLVD, SUITE 430
 ST. LOUIS, MO 63141
 (314) 878-6644

450 COTTONWOOD RD, SUITE B
 GLEN CARBON, IL 62034
 (618) 656-2612
 www.cbtraffic.com



LOT 1
 TENBROOK PLAZA PLAT TWO
 P.B. 245 PG. 20

N/F
TENBROOK LC
 D.B. 1046, PG. 1098
 PARCEL #014.020.04001020.02

PLAN SHEET

ROADWAY IMPROVEMENTS
 JEFFCO BLVD AND TENBROOK RD
 ARNOLD, MISSOURI
 CMAQ-5403(668) TIP 6624-16

IF A SEAL IS PRESENT ON THIS SHEET IT HAS BEEN ELECTRONICALLY SEALED AND DATED.